

# STRATA PORCELAIN COLD CONCEPT COLLECTION

Cold Concept maintains optimal *temperature of 40° F (4° C)* for more than 2 hours.



- Clear Acrylic Dome Covers will keep food fresh & sanitary. Built-in handle for ease of use.
- Porcelain Platters & Bowls are certified by **FDA inspection** to be 100% free of lead and cadmium.
- Eutectic Gel Packs are convenient, efficient, food safe & **NSF approved**.
- Lightweight ABS Chiller Pans are available in Black or White to match stand finish
- 3/8" diameter solid steel metal is fabricated & welded at our Seattle WA, USA factory - **Lifetime Weld Warranty** against breakage.
- High Grade Powder-Coat finish is environmentally firendly, FDA approved **food safe. Dishwasher Safe**
- Quality sand blasted metal process results in a **strong, bonded finish** that will not flake off or rust as painted stands often do.

**GOURMET DISPLAY COLD CONCEPT**  
wins award @ EQUIP' HOTEL Show  
2010 in Paris!  
As one of three **most innovative** tabletop products...

**STAND FINISHES**

<b>B</b>	<b>S</b>	<b>P</b>	<b>W</b>

**B - Black, S - Silver Vein, P - Platinum, W - White**  
**Insert code at end of ORDER #**



# OUR HOTELWARE PORCELAIN

# OUR SOLID STEEL METAL STANDS

## PORCELAIN

- **Twice fired** at 2,500° F (1,371°C) temperature for a **more durable porcelain product** - extreme thermal shock tolerance for increased strength.
- Hard paste, high percentage of kaolin clay for **better density & weight**, resulting in **Hotel-Ware quality porcelain**.
- **BRIGHT WHITE** finish for **optimum** food presentation
- Rolled edge design add **better chip resistance**.
- All porcelain is FDA **inspected & certified food-safe** and 100% lead & cadmium free
- **Microwave, oven, freezer and dishwasher safe**.
- **Fully vitrified, non-porous** clay body for durability and excellent **cold/heat retention**.

## METAL STANDS

- **STRATA Metal Stands** feature our contemporary Double Bar Design.
- 3/8" (1 cm) diameter welded solid steel construction increases **strength & durability**.
- **Manufactured at our Seattle, USA** factory.
- High grade powder coat finish is environmentally friendly, **FDA approved, food & dishwasher safe**.
- Quality sand blasted metal process results in a **strong bonded finish** that will not flake off or rust (as painted stands often do).

### Strata Metal Stand w/ Porcelain Diamond Platter

**CP2303**



**CP2303** includes:  
Metal Stand + 1 Porcelain Plate (**PP252**) + Basin (**CD252**) + Ice Packs (**CD001**). Dome Cover Optional (**DM252**).



#### REPLACEMENTS

**CD001** - Ice Packs



**CD252** - Chiller Pan



**DM252** - Clear Acrylic Dome



**PP252** - Square Porcelain Platter



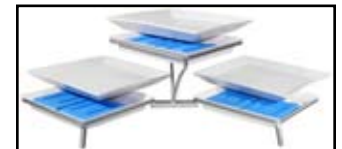
**P252CS** - Porcelain Case Pack (3 per case)



- CP2303 (Tall)** (W)10"-25½ cm • (L)10"-25 cm • (H)7"-18 cm • 7 lbs-3½ kg  
**CP2313 (Med.)** (W)10"-25½ cm • (L)10"-25 cm • (H)4¾"-12 cm • 6 lbs-2¾ kg  
**CP2323 (Short)** (W)10"-25½ cm • (L)10"-25 cm • (H)3¼"-8 cm • 5 lbs-2¼ kg  
**CP3334 (Set)** Includes **CP2303-CP2313-CP2323**

### STRATA PODIUM Metal Stand w/3 Porcelain Platters

**CP1600** (W)16"-40½ cm • (L)34¼"-87½ cm • (H)9¼"-23¼ cm • 17½ lbs-8 kg



**CP1600** includes:  
Metal Stand + 3 Porcelain Plates (**PP252**) + 3 ea. Basins (**CD252**) + 3 ea. Ice Packs (**CD001**).  
Dome Cover Optional (**DM252**).

#### REPLACEMENTS

**CD001**

Ice Packs



**CD252**

Chiller Pan



**DM252**

Clear Acrylic Dome



**PP252**

Square Porcelain Platter



**P252CS**

Porcelain Case Pack (3/case)



# TOWERS

2 and 3-level Powder Coated Metal Tiers  
with *fully vitrified, bright white, hotelware Porcelain* square plates.

## STRATA 3-level Metal TOWER w/3 Porcelain Platters

**CP2300** (W)11½"-29¼ cm • (L)13¾"-35 cm • (H)23½"-60 cm • 12½ lbs-5½ kg



**CP2300** includes:  
Metal Tower + 3 Porcelain Plates  
(**PP252**)+3 ea. Basins (**CD252**)+  
3 ea. Ice Packs (**CD001**).  
Dome Cover Optional (**DM252**).

### REPLACEMENTS

**CD001** - Ice Packs



**CD252** - Chiller Pan



**DM252** - Clear Acrylic Dome



**PP252** - Square Porcelain Platter



**P252CS** - Porcelain Case Pack (3 per case)



## STRATA 2-level Metal TOWER w/2 Porcelain Platters

**CP2314** (W)10½"-26 cm • (L)12¾"-32¼ cm • (H)13"-33 cm • 19 lbs-8½ kg



**CP2314** includes:  
Metal Tower + 2 Porcelain Plates  
(**PP252**)+2 ea. Basins (**CD252**)+  
2 ea. Ice Packs (**CD001**).  
Dome Cover Optional (**DM252**).

### REPLACEMENTS

**CD001** - Ice Packs



**CD252** - Chiller Pan



**DM252** - Clear Acrylic Dome



**PP252** - Square Porcelain Platter



**P252CS** - Porcelain Case Pack (3 per case)



# INCLINE

2 and 3-level Powder Coated Metal Tiers  
with *fully vitrified, bright white, hotelware Porcelain* square plates.

## STRATA 3-level INCLINE Metal Stand w/3 Porcelain Platters

**CP2301** (W)16"-41 cm • (L)26"-66 cm • (H)22"-56 cm • 12¼ lbs-5½ kg



**CP2301** includes:  
Incline Metal stand + 3 Porcelain  
Plates (**PP252**)+3 ea. Basins  
(**CD252**)+3 ea. Ice Packs (**CD001**).  
Dome Cover Optional (**DM252**).

### REPLACEMENTS

**CD001** - Ice Packs



**CD252** - Chiller Pan



**DM252** - Clear Acrylic Dome



**PP252** - Square Porcelain Platter



**P252CS** - Porcelain Case Pack (3 per case)



## STRATA 2-level INCLINE Metal Stand w/2 Porcelain Platters

**CP2322** (W)19½"-49½ cm • (L)19½"-49½ cm • (H)9½"-24 cm • 19 lbs-8½ kg



**CP2322** includes:  
Incline Metal stand + 3 Porcelain  
Plates (**PP252**)+3 ea. Basins  
(**CD252**)+3 ea. Ice Packs (**CD001**).  
Dome Cover Optional (**DM252**).

### REPLACEMENTS

**CD001** - Ice Packs



**CD252** - Chiller Pan



**DM252** - Clear Acrylic Dome



**PP252** - Square Porcelain Platter



**P252CS** - Porcelain Case Pack (3 per case)



# DIAMOND

2 and 3-level Powder Coated Metal Tiers

with fully vitrified, bright white, hotelware Porcelain square plates.

## STRATA 3-level DIAMOND Metal Stand w/3 Porcelain Platters/Bowls

**CP2315** (W)16"-40½ cm • (L)34¼"-87½ cm • (H)9¼"-23½ cm • 17½ lbs-8 kg



**CP2315** includes:  
Metal stand + Porcelain Plates  
(**PP250+PP251+PP252**)  
+ 1 ea. Basin (**CD252**)  
+ 1 ea. Ice Packs (**CD001**).  
Dome Cover Optional (**DM252**).

**PP250** - Small Square Porcelain Bowl



**PP251** - Med. Square Porcelain Bowl



**PP250CS** - Porcelain Case Pack (6/case)



**PP251CS** - Porcelain Case Pack (4/case)



### REPLACEMENTS

**CD001**  
Ice Packs



**CD252**  
Chiller Pan



**DM252**  
Clear Acrylic Dome



**PP252**  
Square Porcelain Platter



**P252CS**  
Porcelain Case Pack (3/case)




# BLOC

1, 2 and 3-level Powder Coated Metal Tiers

with fully vitrified, bright white, hotelware Porcelain square plates.

## STRATA PODIUM Metal Stand w/3 Porcelain BLOC Bowls

**CP1651** (W)16"-40½ cm • (L)34¼"-87½ cm • (H)9¼"-23¼ cm • 26¾ lbs-12 kg

 84 oz. ea.  
2½ liters ea.



**CP1651** includes:  
Metal stand + 3 Porcelain Bowls (**PP351**) +  
3 ea. Basins (**CD351**) + 3 ea. Ice Packs (**CD001**).

### REPLACEMENTS

**PP351**  
Porcelain BLOC bowl



**CD351**  
BLOC Chiller Pan



**CD001**  
Ice Packs



1.800.767.4711 • +1.206.767.4711 • info@gourmetdisplay.com • www.gourmetdisplay.com

# BLOC

1, 2 and 3-level Powder Coated Metal Tiers  
with fully vitrified, bright white, hotelware Porcelain square plates.


## Metal Stand w/2 Porcelain BLOC Bowls

**CP302** (W)10½"-26½ cm • (L)17½"-44½ cm • (H)9¾"-24¾ cm • 18 lbs-8 kg



**CP302** includes:

Metal stand + 2 Porcelain Bowls (**PP351**) +  
2 ea. Basins (**CD351**) + 2 ea. Ice Packs (**CD001**).

 84 oz. ea.  
2½ liters ea.

### REPLACEMENTS

**PP351** - Porcelain BLOC bowl    **CD351** - BLOC Chiller Pan    **CD001** - Ice Packs




## STRATA Metal Stand w/1 Porcelain BLOC Bowl

**CP2351** (W)10¾"-27¼ cm • (L)10¾"-27¼ cm • (H)4½"-11½ cm • 9 lbs-4 kg



**CP2351** includes:

Metal stand + 1 Porcelain Bowl (**PP351**) +  
1 ea. Basin (**CD351**) + 1 ea. Ice Packs (**CD001**).

 84 oz. ea.  
2½ liters ea.

### REPLACEMENTS

**PP351** - Porcelain BLOC bowl    **CD351** - BLOC Chiller Pan    **CD001** - Ice Packs




## STRATA Metal Stand w/2 Porcelain BLOC Bowls

**CP303** (W)10½"-26½ cm • (L)17½"-44½ cm • (H)9¾"-24¾ cm • 18 lbs-8 kg



**CP303** includes:

Metal stand + 2 Porcelain Bowl (**PP351**) +  
2 ea. Basin (**CD351**) + 2 ea. Ice Packs (**CD001**).

 84 oz. ea.  
2½ liters ea.

### REPLACEMENTS

**PP351** - Porcelain BLOC bowl    **CD351** - BLOC Chiller Pan    **CD001** - Ice Packs



# ST3P

Powder Coated Metal Tiers

with fully vitrified, bright white, hotelware Porcelain square plates.

## Rectangular Metal Platform w/2 Porcelain Bowls & Basin

**CP142** (W)8"-20¼ cm • (L)20½"-52 cm • (H)6½"-16½ cm • 9¼ lbs-4 kg¼



36 oz. ea.  
1 liter ea.



**CP142** includes:

Metal stand + 2 Porcelain Bowls (**PP251**)  
+1 Collar (**CF142**)+1 ea. Basin (**CD140**)  
+1 ea. Ice Packs (**CD003**).

**CD003** - Case of 3 each Eutectic Packs



**PP251** - Med. Square Porcelain Bowl



**PP251CS** - Porcelain Case Pack (4/case)



## Rectangular Metal Platform w/3 Porcelain Bowls & Basin

**CP141** (W)8"-20¼ cm • (L)20½"-52 cm • (H)6½"-16½ cm • 9¼ lbs-4 kg¼



24 oz. ea.  
¾ liter ea.



**CP141** includes:

Metal stand + 3 Porcelain Bowls (**PP250**)  
+1 Collar (**CF141**)+1 ea. Basin (**CD140**)  
+ 1 ea. Ice Packs (**CD003**).

**CD003** - Case of 3 each Eutectic Packs



**PP250** - Small Square Porcelain Bowl



**PP250CS** - Porcelain Case Pack (6/case)



# ACCESSORIES

**COLD  
FROID  
FREDDO  
FRIO**

**CD001 (2 ea.)**  
(W)4"-10 cm • (L)6"-15<sup>1</sup>/<sub>4</sub> cm  
(H)1"-2<sup>1</sup>/<sub>2</sub> cm • ½ lbs.-¼ kg



Use on stand: **CD1600-CD1630-CD1651-CD2300  
CD2301-CD2303-CD2313-CD2314-CD2315-CD2322  
CD2323-CD2333-CD2351-CD302-CD4000**

**DM252**  
(W)12"-30<sup>1</sup>/<sub>2</sub> cm • (L)12"-30<sup>1</sup>/<sub>2</sub> cm  
(H)2<sup>1</sup>/<sub>2</sub>"-6<sup>1</sup>/<sub>2</sub> cm • ¾ lbs.-¼ kg



**PP252**  
(W)11<sup>1</sup>/<sub>2</sub>"-29<sup>1</sup>/<sub>4</sub> cm • (L)11<sup>1</sup>/<sub>2</sub>"-29<sup>1</sup>/<sub>4</sub> cm  
(H)1<sup>1</sup>/<sub>2</sub>"-3<sup>3</sup>/<sub>4</sub> cm • 4¼ lbs.-2 kg

**PP252CS - Case Pack: 3**



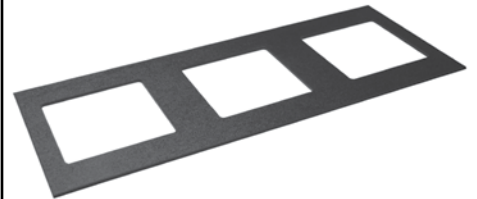
Use on stand: **CP1600-CP1630-CP2300-CP2301  
CP2303-CP2313-CP2314-CP2315-CP2322-CP2323  
CP2333-CP4000**

**CD003 (3 ea.)**  
(W)4"-10 cm • (L)6"-15<sup>1</sup>/<sub>4</sub> cm  
(H)1"-2<sup>1</sup>/<sub>2</sub> cm • ½ lbs.-¼ kg



Use on stand: **CP141-CP142**

**CF141**  
(W)8"-20 cm • (L)20<sup>1</sup>/<sub>2</sub>"-52 cm  
(H)¼"-.6 cm • .65 lbs.-¼ kg



Use on stand: **CP141-CP142**

**PP251**  
(W)8"-20<sup>1</sup>/<sub>4</sub> cm • (L)8"-20<sup>1</sup>/<sub>4</sub> cm  
(H)2<sup>1</sup>/<sub>2</sub>"-6<sup>1</sup>/<sub>4</sub> cm • 2¼ lbs.-1 kg

**PP251CS - Case pack: 4**



Use on stand: **CP142-CP2315**



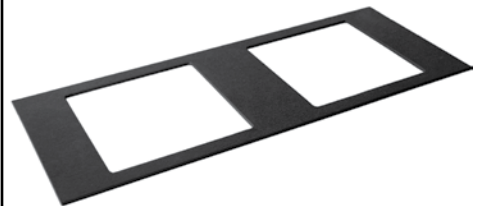
**CD252-2 (White Chiller Pan)**  
(W)10"-25 cm • (L)10"-25 cm  
(H)1<sup>1</sup>/<sub>2</sub>"-3<sup>3</sup>/<sub>4</sub> cm • ¼ lbs.-0.1 kg

**CD252-1 (Black)**



Use on stand: **CP1600-CP1630-CP1651-CP2300  
CP2301-CP2303-CP2314-CP2315-CP2322-CP2323  
CP2333-CP2351-CD4000**

**CF142**  
(W)8"-20 cm • (L)20<sup>1</sup>/<sub>2</sub>"-52 cm  
(H)¼"-.6 cm • ½ lbs.-¼ kg



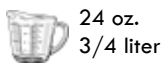
Use on stand: **CP141-CP142**

**PP250**  
(W)7"-17<sup>3</sup>/<sub>4</sub> cm • (L)7"-17<sup>3</sup>/<sub>4</sub> cm  
(H)3"-7<sup>1</sup>/<sub>2</sub> cm • 1¾ lbs.-¾ kg

**PP250CS - Case pack: 6**



Use on stand: **CP141-CP2315**



**CD351-1 (Black Chiller Pan)**  
(W)10<sup>1</sup>/<sub>2</sub>"-26<sup>1</sup>/<sub>2</sub> cm • (L)10<sup>1</sup>/<sub>2</sub>"-26<sup>1</sup>/<sub>2</sub> cm  
(H)4"-10 cm • 0.4 lbs.-0.2 kg

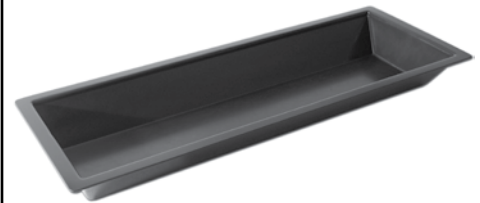
**CD351-2 (White)**



Use on stand: **CP1651-CP302-CP2351**

**CD141-1 (Black Chiller Pan)**  
(W)8"-20 cm • (L)20<sup>1</sup>/<sub>2</sub>"-52 cm  
(H)2"-5 cm • ½ lbs.-¼ kg

**CD141-2 (White)**



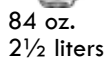
Use on stand: **CP141-CP142**

**PP351**  
(W)10<sup>1</sup>/<sub>2</sub>"-26<sup>1</sup>/<sub>2</sub> cm • (L)10<sup>1</sup>/<sub>2</sub>"-26<sup>1</sup>/<sub>2</sub> cm  
(H)3"-7<sup>1</sup>/<sub>2</sub> cm • 5 lbs.-2¼ kg

**PP351CS - Case Pack: 1**



Use on stand: **CP1651-CP302-CP2351**



**DM01 - Short Dome Holder**  
(W)10<sup>1</sup>/<sub>2</sub>"-26<sup>3</sup>/<sub>4</sub> cm • (L)10<sup>1</sup>/<sub>2</sub>"-26<sup>3</sup>/<sub>4</sub> cm  
(H)11<sup>3</sup>/<sub>4</sub>"-30 cm • 1¼ lbs.-½ kg



**DM02 - Tall Dome Holder**  
(W)12<sup>1</sup>/<sub>2</sub>"-31<sup>3</sup>/<sub>4</sub> cm • (L)12<sup>1</sup>/<sub>2</sub>"-31<sup>3</sup>/<sub>4</sub> cm  
(H)20"-51 cm • 1 lbs.-½ kg

