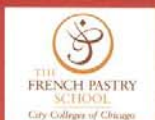


# INDUCTION SYSTEMS

Featuring SmartScan®

Customize your foodservice facility and revolutionize your food preparation with the most advanced commercial induction equipment available. Perfect for demonstration cooking and suite service.

- LED display shows power levels 1-20 on cook mode, and temperatures 90° F – 440° F on temp mode.
- Computer "chip" printed circuit incorporates state-of-the-art software and hardware.
- Adjusts output for voltage, pan size and pan construction.
- Over/Under current voltage protection.
- Low voltage power is more circuit friendly. "Chip" is our built-in service technician. Adjusts instantly to voltage fluctuations.



• Mr. Induction is the exclusive Induction Range of the World Pastry Competition.



## COUNTERTOP *Mr. Induction*™ RANGES

Commercially designed units available in two different power levels featuring one-year warranty. Clean, unobtrusive rear panel.

SR-181C



- The industry's highest wattage, 110-volt induction range.
- Custom-designed for cook and hold buffets and kiosks.
- Thermostatic controls for ideal temperature settings.

Watts	Volts	Amps	Hz	Dimensions (W x D x H)
1800	110-120	15.0	50-60	15.95" x 12.60" x 2.80"

Wt.	NEMA Plug	Approvals	Cord
10#	5-15	FCC, ETL, ETL to NSF4	6', 3 prong

SR-1262F-1



- 208-volt, 2600-watt induction range.
- Designed for high volume cooking.
- Immediate recovery.
- International model available.

Watts	Volts	Amps	Hz	Dim. (W x D x H)
2600	208-220	11.8	50-60	12.625" x 14.50" x 4.25"

Wt.	NEMA Plug	Approvals	Cord
16#	6-20	FCC, ETL, ETL to NSF4, CETL	6', 3 prong

SR-261C



Watts	Volts	Dimensions (W x D x H)
2600	208-220	14.96" x 12.20" x 2.36"

Wt.	NEMA Plug	Approvals	Cord
10#	6-20	FCC, ETL, ETL to NSF4, CETL	6', 3 prong

International Model  
SR-263C 220-240V  
Standard EC Schuko plug  
Available May 1<sup>st</sup>

### SB\_Range

Storage Box for Portable Induction Ranges



Specifications are subject to change without notice.

Induction Systems

# BUILT-IN *Mr. Induction*™ RANGES

Custom-designed cook and hold buffets and kiosks. Includes separate controls that allow for remote mounting. One-year warranty.

SR-181R



- The industry's highest wattage, 110-volt induction range.
- Fast accurate heating for finishing and holding.
- Installs easily in all countertop surfaces.

Watts	Volts	Amps	Hz	Dimensions (W x D x H)
1800	110-120	15.0	60	12.625" x 13.375" x 4.375"
NEMA Plug	Approvals	Cord	Wt.	
5-15	FCC, ETL, ETL to NSF4, CETL	6', 3 prong	8.5 lbs	

SR-1262B-1



- 208-volt, 2600-watt induction range.
- Fast accurate heating for finishing and holding.
- Flush mounted surface gives a finished look.
- International models available.

Watts	Volts	Amps	Hz	Dimensions (W x D x H)
2600	208-220	11.8	50-60	12.625" x 13.375" x 3.875"
NEMA Plug	Approvals	Cord	Wt.	
6-20	FCC, ETL, ETL to NSF4, CETL	6', 3 prong	13 lbs	

SR-261R



International Model  
SR-263R 220-240V  
Standard EC Schuko plug  
Available Sept. 1<sup>st</sup>

Watts	Volts	Dimensions (W x D x H)
2600	208-220	14.96" x 12.20" x 2.36"

NEMA Plug	Approvals	Cord	Wt.
6-20	FCC, ETL, ETL to NSF4, CETL	6', 3 prong	13 lbs.

SR-650M



**HOLD ONLY**  
Preset temps: 150 F  
160 F  
170 F  
180 F

Watts	Volts	Dimensions (W x D x H)
650	110-120	12.625" x 13.375" x 4.375"

## CUSTOM CABINETS

### Built-In *Mr. Induction*® Range

Portable unit you customize to complement your décor. Specially crafted with our built-in Mr. Induction range. Custom color schemes are available.



SRS-2-181



SRC-181



SRC-2-181

Range	Watts	Volts	Amps	Hz	Dimensions (W x D x H)	Wt.	NEMA Plug	Approvals	Cord
SRC-181	1800	110-120	2x15.0	-	14.125" x 20.125" x 6"	20#	5-15	FCC, ETL, ETL to NSF4, CETL	6', 3 prong
SRC-1262	2600	208-220	2x11.8	50-60	14.125" x 20.125" x 6"	20#	6-20	FCC, ETL, ETL to NSF4, CETL	6', 3 prong
SRC-2-181	1800	110-120	2x15.0	-	29.50"0 x 20.125" x 6"	41#	5-15	FCC, ETL, ETL to NSF4, CETL	6', 3 prong
SRC-2-1262	2600	208-220	2x11.8	50-60	29.50"0 x 20.125" x 6"	41#	6-20	FCC, ETL, ETL to NSF4, CETL	6', 3 prong
SRS-2-181	1800	110-120	2x15.0	-	29.50"0 x 20.125" x 6"	41#	5-15	FCC, ETL, ETL to NSF4, CETL	6', 3 prong
SRS-2-1262	2600	208-220	2x11.8	50-60	29.50"0 x 20.125" x 6"	41#	6-20	FCC, ETL, ETL to NSF4, CETL	6', 3 prong

Specifications are subject to change without notice.